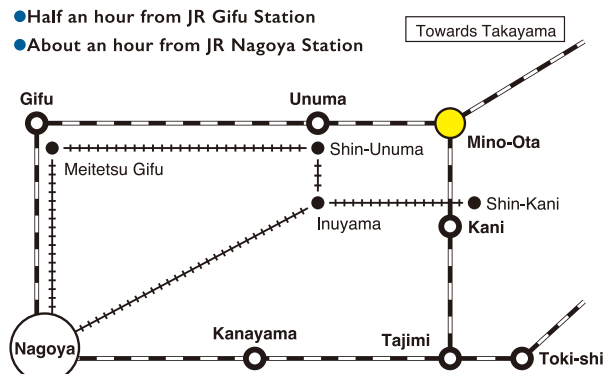


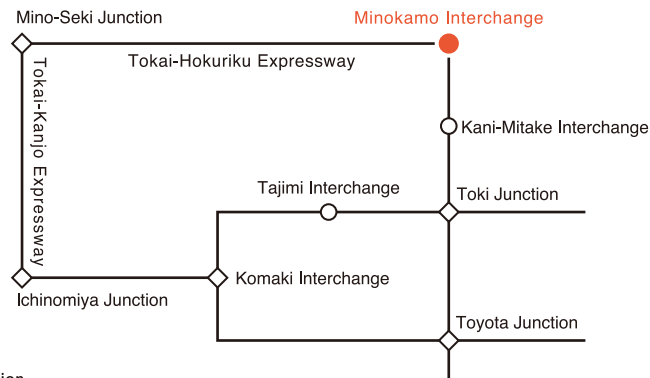
Access & Transport

Train Access



※ Please take the Ai-Ai Community Bus or the Totetsu Bus from JR Mino-Ota Station.

Car Access



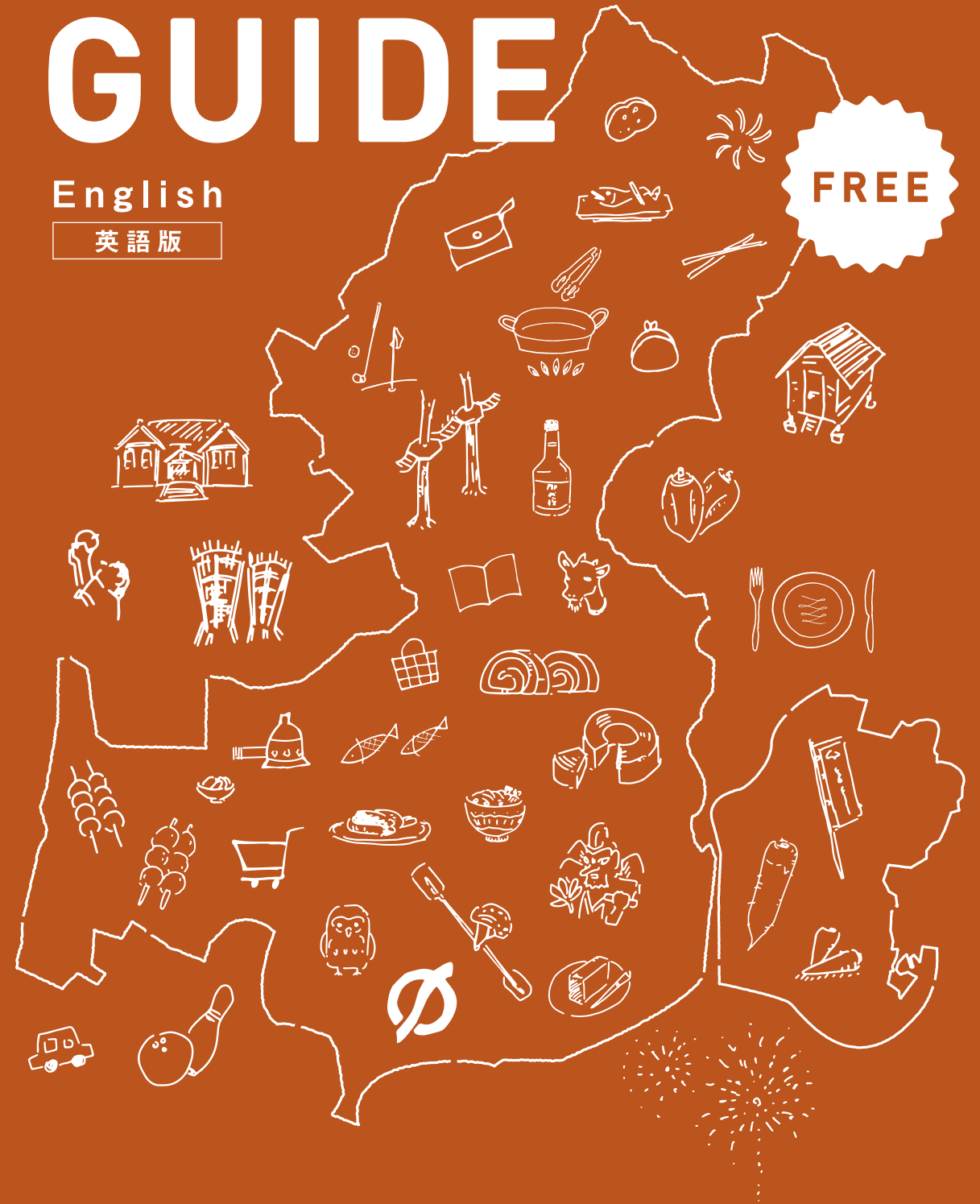
みのかもがいとど

MINOKAMO GUIDE

English

英語版

FREE



JR Mino-Ota Station

Ota-cho Tateishi 2484

● TEL / 0574-57-3001

55



Shin-Ota Taxi Corp.

Ota-cho 4361

● TEL / 0574-25-2105



56

Gifu Kotsu Taxi Group

Kamono-cho, Takanosu 913-3

● TEL / 0574-26-0101



57



Minokamo Interchange Service Area

Hachiya-cho Kamihachiya 2564

With an eating area designed to look like Nakasendo Ota-juku, and showcasing a menu from local ingredients. In the shop, there's a Minokamo corner with goods and produce from the area. There's lots to see and do!

● TEL / 0574-24-5353

● Opening Hours: 7:00am – 10:00pm April through November; until 9:00pm January through March (last order at 8:00pm for fried food)

● Open every day

● Parking: The upper lot and the lower lot have 34 spaces, 12 large car spaces, and 1 disabled parking space each



Made with fine noodles, chicken bone broth, and veggies.



◀ Mino Soy Sauce Ramen, ¥720

With classic Tokai region sweet red miso!

Miso Cutlet Rice Bowl, ¥890



Order by phone or at the counter

Nagaragawa Railway's "Nagara" Tourist Carriage

Seki City, Motoshige-cho 74-1

● TEL / 0575-46-8021 (Booking Center)

● Reception Hours: 10:00am – 4:00pm

● Closed December 31st – January 3rd



Nagara Tourist Carriage – Forest View Plan / Ayu Sweetfish Lunch Plan

Runs Friday, Saturday, Sunday, and weekends, from Mino-Ota, through Gujo-Hachiman, to Hokuno (Sweets Plan available)

● Lunch: Adults, ¥12,500; Children, ¥11,120

● Viewing Plan: ¥510 plus standard fare for the journey

● Sweets Plan: Adults, ¥5,800; Children, ¥4,800

Kawakaze Tourist Carriage – Bento Lunch Plan / Drinks Plan

Runs Saturday from Seki to Gujo-Hachiman (Bento Plan) and from Gujo-Hachiman to Mino-Ota (Drinks plan)

● Adults, ¥6,300; Children, ¥5,300



Pamphlet produced by Minokamo City & Minokamo City Tourism Association

Minokamo City Hall Industrial Promotion Division, Ota-cho 3431-1, Minokamo City, Gifu Prefecture 〒505-8606.

TEL 0574-25-2111 E-mail onsai@mail2.city.minokamo.gifu.jp

First Printing May 2019. Translated in March 2020. All prices include 10% tax.

Gourmet

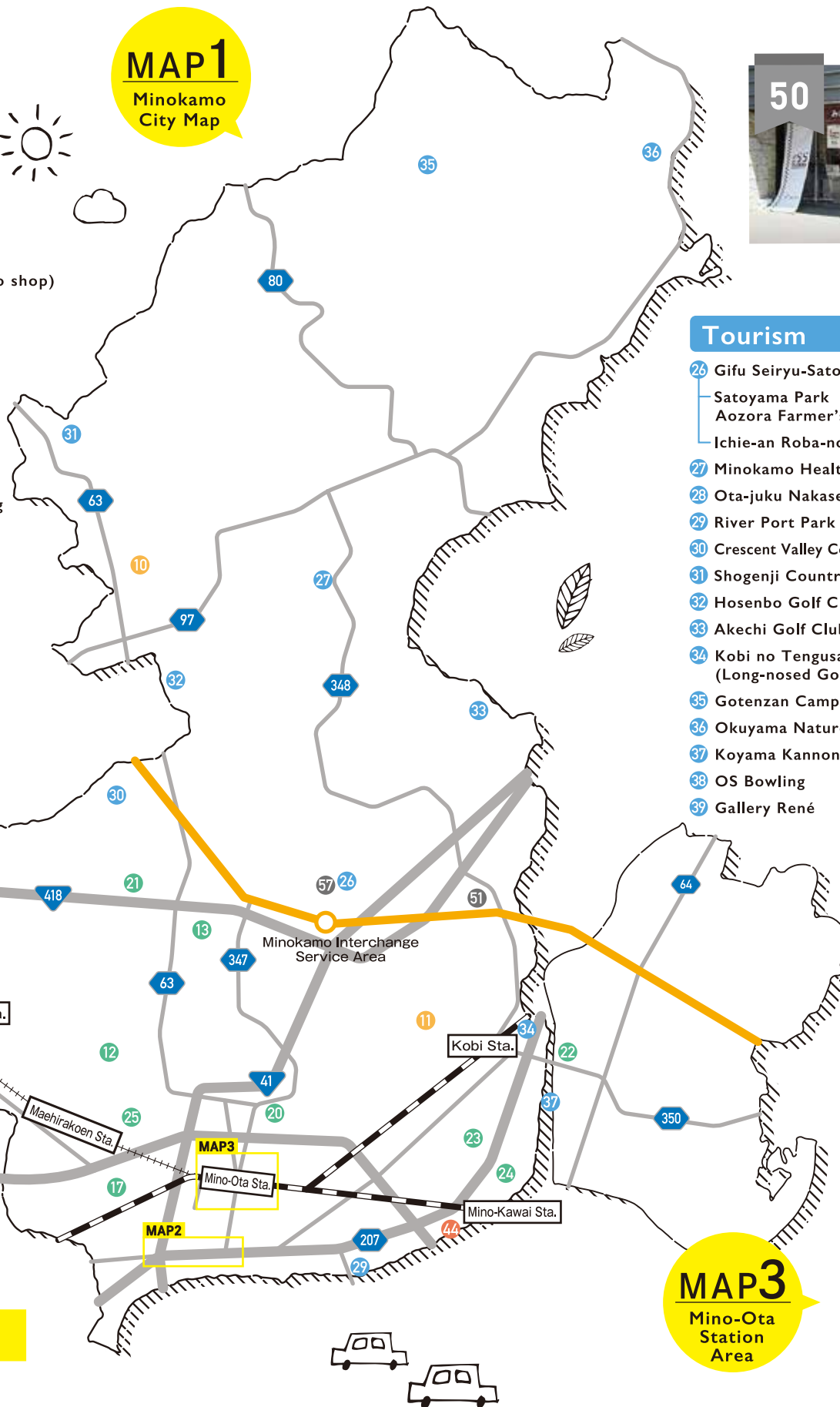
- 1 Kamogawa Saryo Uokan
- 2 Takuan Japanese Restaurant
- 3 Fukumi Ryokan Inn Restaurant
- 4 Uotoku Shoten (Norinbe)
- 5 Waka Japanese Restaurant
- 6 Uoshige
- 7 Tom's So-ya
- 8 Koryukan
- 9 Kanti Indian & Nepalese Restaurant
- 10 O'carré Café (Closed since 31/3/2020.)
(Historical Ibuka Town Hall Building)
- 11 Yamaki Marché Farm Café

Shopping

- 12 Temps D'or
- 13 Monteur Sweets Factory
- 14 Green Centre Ichi-gokan
- 15 Minokamo Kinchodo
- 16 Matsuba Japanese Confectionary
- 17 Hatsuho Seika
- 18 Go-o Kamono-ten (Discount Dango shop)
- 19 Miyozakura Brewery
- 20 Nikunokatayama (Meat shop)
- 21 Minokamo Dojo-hachiyagaki
Persimmon Growers' Association
- 22 Fresh Mothers
- 23 Frusic Minokamo
- 24 Fukuro-no-yakata
Mori-no-Shoyo Owl Forest
- 25 Ah! Shinso Hiroba Watako Bedding

MAP1

Minokamo
City Map



Minokamo Hot Studio (Tourist Information Centre)

Ota-cho 2484

The Minokamo Hot Studio not only broadcasts radio from underneath the southern entrance of Mino-Ota Station, but also serves as a rest space and tourist information centre.

- TEL / 0574-50-2080
- Opening Hours: 9:00am – 4:00pm
- Closed Wednesday (Thursday if Wednesday is a public holiday)



Tourism

- 26 Gifu Seiryu-Satoyama Park
Satoyama Park
Aozora Farmer's Market
Ichie-an Roba-no-Pan Bread Factory
- 27 Minokamo Health Forest Park
- 28 Ota-juku Nakasendo Hall
- 29 River Port Park Minokamo
- 30 Crescent Valley Country Club Minokamo
- 31 Shogenji Country Club
- 32 Hosenbo Golf Club
- 33 Akechi Golf Club Shinsaiji Course
- 34 Kobi no Tengusan
(Long-nosed Goblin Temple)
- 35 Gotenzan Campground
- 36 Okuyama Nature Trail
- 37 Koyama Kannon Temple
- 38 OS Bowling
- 39 Gallery René

Accommodation

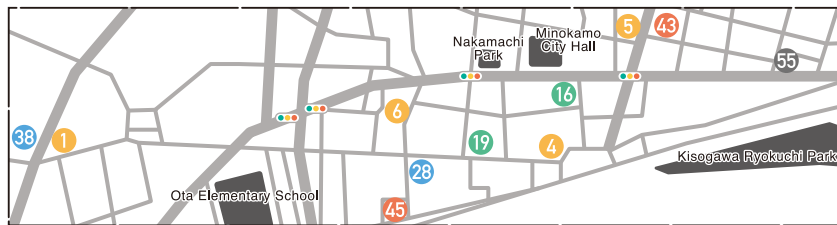
- 41 Sakae-ya Ryokan (Japanese Inn)
- 42 Iroha Business Ryokan (J. Inn)
- 43 Genrokuso Tourist Ryokan (J. Inn)
- 44 Kawasajiki Inn
- 45 Fuji Ryokan (J. Inn)
- 46 City Hotel Minokamo
- 47 Minokamo Station Hotel
- 48 Route Inn Hotel Minokamo

Miscellaneous

- 49 Coms Printing Corporation
- 50 Minokamo Hot Studio
(Tourist Information Centre)
- 51 Yamanoue Fruit Picking Orchard
- 52 Minokamo Tourist (Travel Agency)
- 53 Business Travel
- 54 Co-yane Community and
Coworking Space
- 55 Shin-Ota Taxi Corp.
- 56 Gifu Kotsu Taxi Group
- 57 Minokamo Interchange Service Area

MAP2

Ota-juku
Post Town
Map



49

Coms Printing Corporation

Kamono-cho Takanosu 2063

- TEL / 0574-54-4435
- Opening Hours: 8:00am – 5:00pm
- Closed weekends, public holidays,
Obon, Golden Week, and over New Year's.



◀ Nakasendo Ota-Juku
Post Town Crunchy
Chocolate,
[16pcs.] ¥1,080

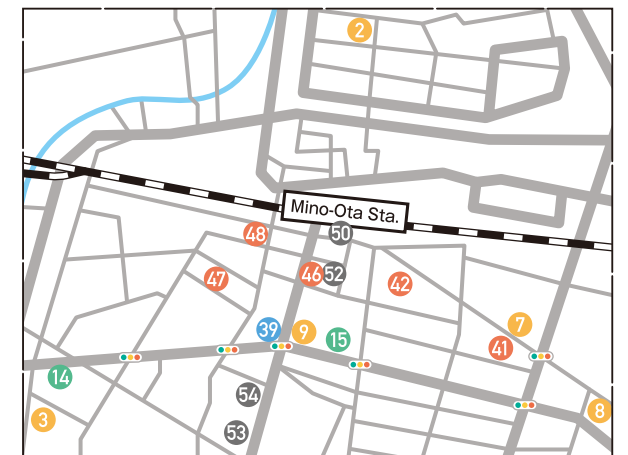
No-Rin
Chocolate Crunch,
[8pcs.] ¥800 ▶



Also for sale at the Ota-juku Nakasendo Hall and
at Antenna Shop Minok' mon (46 on map, first floor)

MAP3

Mino-Ota
Station
Area



Gourmet

Introducing Japanese cuisine that makes use of Minokamo's lush natural resources, creative takes on Western Cuisine, and fruit that you can enjoy straight from the farm.



1



Kamogawa Saryo Uokan

Kamogawa-cho 3-7-17

The head chef carefully selects the best local produce to make truly delicious dishes. Don't miss the thick, tender eel that has been loved by countless guests.

- TEL/ 0574-25-0770
- Opening Hours:
11:00am – 2:00pm
5:00pm – 9:00pm
- Closed Thursday
- Parking: 50 spaces



Uokan Lunch, ¥2,200 (with eel)



Uokan-zen Course, ¥4,950



Hana-zen Course, ¥3,850

2



Japanese Restaurant Takuan

Otemachi 2-82

Takuan is well-known for attracting repeat guests from far and wide. Ingredients are selected carefully and used to create colourful dishes in generous portions. A safe bet to satisfy your heart and your stomach.

- TEL/ 0574-27-5788
- Opening Hours:
11:00am – 2:00pm
5:00pm – 9:00pm
- Closed Wednesday
- Parking: 40 spaces



▲ Wa-no-kokoro Shokado Bento: Hana Set, ¥1,650 / Tsuki Set, ¥2,200



3



Ryokan Inn Restaurant Fukumi

Ota-cho 1896-3

Fukumi is a traditional Japanese inn that also serves lunch and dinner to the public (reservations essential). Enjoy a touch of luxury, by enjoying Kaiseki banquet cuisine in spacious traditional tatami rooms. Functions also offered.

- TEL/ 0574-25-2850
- Opening Hours:
11:00am – 10:00pm
- Open every day*
- Parking: 20 spaces

*Closes occasionally at owner's discretion.



Kaiseki Full Course, ¥3,850 Mini Course, ¥2,200



4



Uotoku Shoten (Norinbe)

Otahonmachi 2-8-9

The standout dishes include Kaisen-don (seafood bowl), with fish fresh from Gifu City market every morning, and Eel Kabayaki (broiled in soy sauce). Locals often buy kanroni (sweet soy sauce) fish, with male ayu sweetfish in spring and summer, and ayu sweetfish with roe inside in autumn and winter.

- TEL/ 0574-26-0551
- Opening Hours:
11:30am – 2:00pm
5:00pm – 7:00pm
- Closed for Wednesday Lunch
- Parking: 5 spaces



▲ Irodori-don, ¥1,600



▲ Unagi-don (Eel), ¥1,700



▼ Ten-don/Katsu-don (with side and miso soup), ¥710 [Lunch] / ¥940 [Dinner]

5



Japanese Restaurant Waka

Ota-cho 3615-2

Waka's cute blowfish logo can be seen above the entrance. Their Tenkatsu-don, with tempura and breaded pork cutlet, is popular. With affordable prices, this restaurant attracts many regulars from the local area.

- TEL/ 0574-25-7217
- Opening Hours: 11:30am – 2:00pm
2:00pm – 11:00pm
- Closed Sunday
- Parking: 7 spaces



▲ Tenkatsu-don (with side and miso soup), ¥880 [Lunch] / ¥1,100 [Dinner]



6



Uoshige

Otahonmachi 4-2-1

This traditional Japanese restaurant has sold takeaway food since its establishment. They also offer an eat-in buffet lunch with a wide range of delicately seasoned dishes, and banquet courses for dinner (Min. 10pax.; reservations essential). (If it's very busy, eat-in lunch may not be available.)

- TEL / 0574-26-0337
- Opening Hours: 11:30am – 1:30pm
- Open every day for takeaway; for eat-in lunch weekdays only (except for public holidays)
- Parking: 15 spaces



▲ Lunch: Choice of main with all-you-can-eat sides, ¥1,100
(Main: Choose from Soba noodles, Sashimi, Tuna-don, Fried Prawn, Mixed Fry, Chicken Nanban)

7



Tom's So-ya

Kobi-cho, Shimo-kobi 2982-11

A Western restaurant with tasteful brown-and-white themed décor. Well known for tender, juicy burger patties with plenty of gravy. There are plenty of options on the menu, so you won't get bored no matter how many times you visit.

- TEL / 0574-25-3345
- Opening Hours: 11:00am – 2:00pm
5:00pm – 10:00pm
- Closed Monday
- Parking: 15 spaces



▲ Tom's Burger Patty with Demiglace sauce, ¥1,320



8

Koryukan

Nakatomi-cho 1-10-6

Koryukan offers catering, and takeaway bento boxes to match your budget, and delivery is also available. Why not get food for a picnic on a nice sunny day?

- TEL / 0574-25-2083
- Opening Hours: 8:00am – 5:00pm
- Open every day*
- Parking available
- *Closes occasionally at owner's discretion.



Matsutake Kamameshi (Mushroom Rice Pot)

A bento with history: once sold as Mino-Ota's train station bento!
(No longer for sale)

◀ Other bentos available by advance reservation only – please enquire by phone.

9



Indian & Nepalese Restaurant Kanti

Ota-cho 2541-6

The chef, who worked in an Indian hotel restaurant, bases his dishes on the Ayurvedic medicinal diet, and aims to make food that is gentle for the body. There is a collection of wines, making an Indian restaurant rather unlike many others.

- TEL / 0574-28-6061
- Opening Hours: 11:00am – 2:30pm
5:00pm – 10:00pm
- Closed for Thursday Lunch
- Parking: 4 spaces



▲ Butter Chicken Curry Set, ¥1,097 (+¥275 for cheese naan)



10



Historical Ibuka Town Hall Building O'carré Café

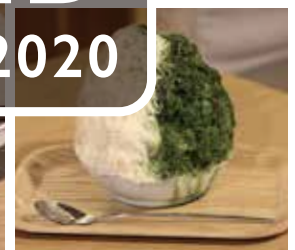
Ibuka-cho 895

Located in the restored historical Town Hall building of Ibuka Village that survived the Second World War (now a Registered Tangible Cultural Property), this is a tasteful café with a historical flair that serves fine teas and sweets in a relaxed atmosphere.

- TEL / 0574-29-3011
- Opening Hours: 11:00am – 5:00pm
- Closed since 31/3/2020.
- Parking available



▲ Hagoromo Matcha (Meijiya Tea Company), ¥600



▲ Geisha's Shaved Ice (Matcha Milk), ¥900

11



Farm Café

Yamaki Marché

Yamanoue-cho 1004-3

Freshly-picked seasonal fruit from the adjacent Yamaki farm is used to make sweets and dried fruit which get rave reviews. Enjoy a relaxing time out in nature.

- TEL / 0574-26-5596
- Opening Hours: 10:00am – 5:00pm
- Closed: Monday (Tuesday if a public holiday falls on Monday). Open every day in pear season (August - November)
- Parking: 10 spaces



▲ Croissant Sandwich (with salad and soup), ¥900



▲ Seasonal fruit parfait, ¥950

Shopping

Introducing shops that sell freshly-picked fruits and veggies, and handmade items that can only be found here. Maybe you'll find your new favourite shop!



12



Baumkuchen,
¥1,080/¥1,620/¥2,160



Temps D'or

Ajisaigaoka 1-7

This shop sells Western-style cakes and sweets directly from the factory. A wide range of cakes and baked goods are on display in the simple and modern café. Choosing just one cake is going to be a challenge!



- TEL/ 0574-25-7007
- Open every day
- Parking: 21 spaces
- Opening Hours: 9:00am – 7:00pm (shop)
9:00am – 6:00pm (Café, last order at 5:30pm)



13



▲ **Milk Soft Serve,**
¥216 (eat in ¥220)

▲ **Extra Thick Baumkuchen,**
¥3,240 (eat in ¥3,300)

Monteur Sweets Factory (Minokamo Outlet Store)

Hachiyadai 1-5-1

Monteur sells goods such as cream puffs and eclairs from their direct outlet, as well as baked treats and soft-serve ice cream that's only available here. Factory tours (by reservation) are a huge hit, particularly with families.

- TEL/ 048-994-3710 (Outlet Store, Weekdays 9:00am – 5:00pm)
- Opening Hours: 10:00am – 5:00pm (Outlet Store)
- Outlet closed on the first and second of January; Factory tours unavailable on the last day of each month (Please enquire by phone)
- Parking: 8 spaces



14



Green Centre Ichi-gokan

Ota-cho 1891-1

There is a line-up of various shops that sell vegetables, rice, flowers, fresh fish, meats, and regional specialties. It's a direct outlet that prides itself in only selling local produce.



- TEL/ 0574-28-1223
- Opening Hours: 9:00am – 4:00pm
- Closed every second and fourth Wednesday of the month
- Parking: 45 spaces



15



▲ **Hachiya-gaki Persimmon Yokan Jelly**
(6 pcs.), ¥2,000



▲ **Butter Dorayaki**
(1pc.), ¥270



Minokamo Kinchodo

Ota-cho 2601-1

This shop boasts a selection of seasonal Japanese sweets that use local ingredients. You can enjoy matcha tea and sweet sets or mitarashi-dango (rice dumplings in sweet soy glaze on skewers) in the provided dining space.

- TEL/ 0574-25-2293
- Opening Hours: 8:30am – 6:00pm
- Closed Wednesday and the last Thursday of every month
- Parking: 5 spaces



16



▲ **Kaki-awase**
(1pc.), ¥160



▲ **Fresh Cream and Cheese Dorayaki**
(1pc.), ¥240



Matsuba Japanese Confectionery

Otahonmachi 2-10-2

A traditional Japanese sweet store with history from the nearby Nakasendo Trail Ota-juku Post Stop. There is a broad variety of sweets, including the 'Kaki-awase', a snack with local Dojo persimmon paste, and cream and cheese Dorayaki.

- TEL/ 0574-25-2370
- Opening Hours: 8:30am – 6:30pm
- Closed Monday
- Parking: 4 spaces



17



Kutsurogi (1 box),
¥3,240

Hatsuho Seika

Nishimachi 3-253

Hatsuho Seika was the first company to produce the now famous tiny 'areare' – colourful roasted rice cracker bits. The colours are cute and fun, and they taste great too. Why not treat your loved ones with an iconic Japanese souvenir?

- TEL/ 0574-26-4147
- Opening Hours: 9:00am – 5:00pm
- Closed weekends and public holidays
- Parking available

Also for sale at the Ota-juku Nakasendo Hall and at Antenna Shop Minok'mon (46 on map, first floor)



18



▼ **Gohei-mochi**
(1stick), ¥60

Mitarashi-dango
(1stick), ¥30 ▶



Go-o Kamono-ten (Discount Dango shop)

Kamono Imaizumi 776-1

Mitarashi-dango at the unbelievably cheap price of ¥30 per stick. Although cheap, they put a lot of care into the flavour, making this shop loved by young and old alike.

- TEL/ 0574-26-3087 (Phone orders accepted)
- Opening Hours: 9:30am – 6:00pm
- Open weekends and Wednesday
- Parking Not Available



19

◀ Miyozakura Junmai Ginjo
Minokamo "Asahi-no-yume"
¥2,750 (1800ml)
¥1,375 (720ml)
¥638 (300ml)



▲ Miyozakura Junmai Sake Cup
[180ml], ¥330

Miyozakura Brewery

Otahanmachi 3-2-9

Miyozakura has won gold countless times in the Annual Japan Sake Awards. Miyozakura Sake is made with attention to detail, starting with local ingredients, and brewed with refined technology and traditional hand-crafted methods.

- TEL / 0574-25-3428
- Opening Hours: 8:00am – 5:00pm
- Closed weekends and public holidays
- Parking: 10 spaces



20



Tokusei-Marū-Menchi Fried Mince Ball
(1pc.), ¥151 ※¥130 each for five or more



◀ Wiener Croquette
(1pc.), ¥65

Nikunokatayama

Otemachi 1-5

Nikunokatayama sells meats by weight, and has the knowledge and experience of a butcher. There are many original creations for sale, and their popular special fried mince meat balls are limited to only 500 per day.

- TEL / 0574-25-7136
- Opening Hours: 9:00am – 8:00pm
- Closed Tuesday
- Parking: 30 spaces



21



Minokamo Dojo-hachiyagaki Persimmon Growers' Association

Hachiya-cho Kamihachiya 6-1

The art of making dried persimmons has been passed down since the Heian Era (794AD-1185AD), and Dojo-hachiyagaki Persimmons from Minokamo City have been crowned the king of this luxurious treat. They have been recognised by the Arc of Taste, a slow-food magazine that is known as the World Heritage of food.

- TEL / 0574-25-2902
- Open from December through January (may change from year to year)
- Parking available



22



▲ Vegetable Platter (incl. delivery), ¥3,000
(Selection and quantity change according to seasonal availability)



Fresh Mothers

Shimoyoneda-cho Nishiwaki 25

A fresh vegetable store. Various pickles are made in-house, such as cabbage, turnip, and gourd. You can also buy handmade cakes and cookies.

- TEL / 0574-26-1616
- Opening Hours: 8:30am – 5:00pm
- Closed weekends, public holidays, in summer and over New Year's
- Parking: 20 spaces

23



Frusic Minokamo

Hongo-cho 9-18-34

Eating fruit while listening to pleasant background music is good for the body as well as the soul (Fruit + Music = Frusic). Feel refreshed starting from the inside out with the nutritious minerals in fruit.

- TEL / 0574-25-7183
- Opening Hours: 9:00am – 4:00pm (reservations required)
- Open every day*
- Parking: 3 spaces
- ※Closes occasionally at owner's discretion.



24



◀ Lucky Three Owl Pottery Set, ¥1,100

Water Bison Horn Pen and Stamp Stand, ¥1,100



Fukuro-no-yakata Mori-no-Shoyo Owl Forest

Kawai-cho 1-10-6

This shop is packed with owl-themed goods – the best range and selection of owl merchandise in Japan. You can drink Vietnamese coffee as you gaze out over the garden.

- TEL / 0574-25-9839
- Opening Hours: 10:00am – 5:00pm
- Closed Monday (Tuesday if Monday is a public holiday)
- Parking: 8 spaces

25



Down Futon Comforter, from ¥19,800~
Blanket (Acrylic, Polyester, Cotton, Silk, Hemp, Wool), ¥2,980~

Ah! Shinso Hiroba Watako Bedding

Maehira-cho 1-191

Good for people, good for the environment. Watako bedding goes back to the basics with completely recyclable products. They offer a range of high-quality bedding options in your price range to help you properly rest your tired body and mind after a long day.

- TEL / 0574-25-3275
- Opening Hours: 9:30am – 6:00pm
- Closed Tuesday
- Parking: 15 spaces



Tourism

Introducing tourist spots that can be enjoyed on your own or with the family. Enjoy Minokamo's lush nature, and feel its history in the Nakasendo Ota-juku Post Town area.



26



Gifu Seiryu-Satoyama Park

Yamanoue-cho 2292-1

This park is based on the "Satoyama" concept, in which Japanese villagers lived in the foothills of the mountains and relied upon the mountains for their livelihoods. There are mulberry and tea plantations, and a rustic wooden schoolhouse from a bygone era. There is a slide, adventure park, rice cracker roasting and soba-making experiences, a Japanese sweet shop from the Showa Era (1926-1989), and more.

- TEL / 0574-23-0066
- Opening Hours: 9:00am – 6:00pm (Dec-Feb: 10:00am-5:00pm)
- Closed Wednesday from Dec. to Feb. (Satoyama-no-Yu is always open)
- Parking: 2,500 spaces



- ① **Daiju no Yugu** (free, 6 – 12 y.o.)
- ② **Panza Complex**
- MegaZip ¥1,200 ● Skyjam ¥800 ● Aerial ¥3,000~
- **Satoyama-no-Yu Baths**(10:00am – 10:00pm)
- Adults (12+ y.o.): ¥620 weekdays, ¥720 weekends and public holidays
- Children (4 – 12 y. o.): ¥310
- 12x entry ticket: Adults, ¥6,700; Children, ¥3,100 (65+ y.o. and disability discounts offered)



Aozora Farmer's Market

- TEL / 0574-27-2217
- Open every day except Wednesday in Jan. and Feb.
- Opening Hours: 9:00am – 5:00pm



Ichie-an Roba-no-Pan Bread Factory

- TEL / 058-213-8188
- Open weekends only
- Opening Hours: 10:30am – 4:30pm (changes depending on demand)



Unfiltered Doburoku Sake (ml), ¥1,100



Roba-no-Pan Bread (1pc.), ¥216

28



Ota-juku Nakasendo Hall

Otahonmachi 3-3-31

The Ota-juku Post Town was the 51st on the Nakasendo (Mid-Mountain Trail), the trail that linked the imperial capital of Kyoto to the political capital of Edo (now Tokyo) in the Edo Period (1600-1868). At the Ota-juku Nakasendo Hall Museum, you can see this history. There is also local produce, souvenirs and handicrafts for sale, as well as a restaurant that uses local ingredients. The Hall is the best starting point for a walk around the historical Ota-juku.

- TEL / 0574-23-2200
- Opening Hours: 9:00am – 5:00pm (Cafe until 4:00pm, last order at 3:30pm)
- Closed Monday (Tuesday if Monday is a public holiday), and over New Year's
- Parking: 43 spaces



Yadorigi Bento Lunch, ¥1,000



Wakihonjin Former Hayashi Family Residence

27



Minokamo Health Forest Park

Yamanoue-cho 559

Fun for friends and family abounds in this huge 128-hectare park, that offers mountain treks and free attractions such as a roller slide and a barbecue area. You can get back in touch with nature by gazing at Mt. Ibuki and Mt. Ontake from the observatory at the top of 777 steps.

- TEL / 0574-29-1108
- Opening Hours: 9:00am – 5:00pm (closes at 4:00pm from Oct. – Mar.)
- Closed Wednesday (Thursday if Wednesday is a public holiday)
- Parking: 300 spaces

Treetop Adventure
¥1,500 / entry
(Must be 12+ y.o., taller than 120cm, and less than 120kg. Please confirm availability)



29



River Port Park Minokamo

Mikado-cho 2-6-6

Why not enjoy BBQ, river activities from the bank of the beautiful and multifaceted Kiso river? Feel a touch of luxury by renting a tent, hammock, or rug mat.

- TEL / 0574-49-6717
- Opening Hours: 9:00am – 5:00pm
- Closed Tuesday
- Parking: 180 spaces

River Port BBQ
(Unlimited refills of vegetables)
¥2,200 plus ¥3,100 per person

Kiso River Adventure – Rafting (10km)
Adult: ¥8,700; 13 – 15 y.o.: ¥7,700
7 - 12 y.o.: ¥6,700;

Prices include guide, equipment, insurance, shower, and a drink.
※¥500 extra in August



30



Crescent Valley Country Club Minokamo

Hachiya-cho Hachiya 1173

- TEL / 0574-25-2244
- Opening Hours: 7:00am – 5:00pm
- Closed New Year's Day
- Parking: 160 spaces



31



Shogenji Country Club

Ibuka-cho 2345

- TEL / 0574-29-1891
- Opening Hours: 7:00am – 5:00pm
- Open every day
- Parking: 200 spaces



32



Hosenzo Golf Club

Hachiya-cho, Nakahachiya 1617

- TEL / 0574-27-3111
- Opening Hours: 6:00am – 6:00pm
- Open every day
- Parking: 145 spaces



33



Akechi Golf Club Shinsaiji Course

Yamanoue-cho 3300-1

- TEL / 0574-25-4111
- Opening Hours: 7:00am – 6:00pm
- Open every day (will close for maintenance 3-4 days per year, please enquire)
- Parking: 100 spaces



Claris' Cheek Cake,
¥1,296



34

Kobi No Tengusan

Moriyama-cho 3-5-57

Many worshippers visit this shrine monthly to worship the so-called God of Wishes. This is the main shrine of the Aranagiokami religion, and contains about 3,400 masks and statues of the Long-Nosed Goblins, the divine assistants of the God. There is a 12-metre-high goblin that's a must see!

- TEL / 0574-26-1331
- Opening Hours: 9:00am – 4:30pm
- Open every day
- Parking: 30 spaces

Try the handmade
Brown Rice
Gohei-mochi, or the
Brown Rice Amazake!



35



Gotenzan Campground

Miwa-cho, Kamitsuzuya

This campground is like a little garden, located in the foothills of the Gotenzan mountain. Apart from just staying the night, you can cook in the pizza oven, chop firewood, and play in the river.



Bungalow rental
(up to 5 people per bungalow), ¥5,000
BYO tent camping fee, ¥1,500
(Utilities usage fees not included)

- TEL / 090-3259-3020
- Open for accommodation from Jun. – September; during the day from April
- Parking available

36



Okuyama Nature Trail

Miwa-cho

Walking up to the summit of Mt. Gotenzan in the northernmost part of Minokamo, you can see beautiful waterfalls, boulders, and breathtaking scenery.

- TEL / 0574-25-2111
(Minokamo City Hall Industrial Promotion Division)
- Parking available

37



Koyama Kannon Temple

Shimoyoneda-cho, Koyama 104

A temple to worship Hayagriva Buddha lies atop an island on the Hida River. In Autumn, there are birds, and in Spring, the cherry blossom trees bloom.

- 0574-26-9133
- Parking: 50 spaces

38



OS Bowling

Kamogawa-cho 3-8-15

Weekdays: 3 games, ¥644
Seniors (60+ y.o.): 1 game, ¥209
Families with kids (under 12 y.o.): 2 games, ¥633
Prices change based on time and day.

- TEL / 0574-26-3161
- Opening Hours: 10:00am – 10:30pm (Reception closes at 10:15)
- Closed Tuesdays and New Year's Eve
- Parking: 550 spaces



39



Gallery René

Ota-cho 1752-1 Noritake Bldg. 2F

There are permanent and temporary exhibitions from artists like Kusama Yayoi, Ikeda Masuo, Takehisa Yumeji, and more.

- TEL / 0574-26-4111
- Opening Hours: 11:00am – 6:00pm
- Open every day*
- Parking available
- *Closes occasionally at owner's discretion.

40



Kisogawa Cormorant Fishing

Aichi Prefecture, Inuyama City, Inuyama Kitahakusan 2

Evening Viewing: 1h 15m, ¥3,000 (Children, ¥1,500)
Evening Viewing and Dinner: 2h 30m, above prices plus food
Viewing and Lunch: 2h 20m, ¥5,000

- TEL / 0568-61-2727
- Bookings & Enquiries 9:30am – 4:00pm weekdays only April through May; until 6:00pm June until the 15th of October.



Accommodation

Introducing a variety of accommodation options, including convenient options close to the station, and traditional Japanese inns (Ryokan) that serve local cuisine.



42

Iroha Business Ryokan Wi-Fi/LAN

Kobi-cho Shimokobi 2973-1 ●TEL/ 0574-23-0066



The daily menu is nutritionally balanced and generous in size. There is a coin laundry and a place to dry clothes, a shower room, and a jacuzzi bath. (11m²/8m²)

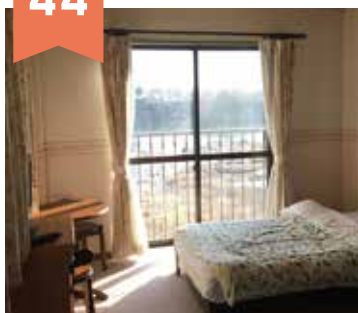
- From ¥6,600 (breakfast and dinner)
- From ¥4,950 (without meals)
- From ¥5,500 (with breakfast)
- From ¥6,050 (dinner only)



44

Kawasajiki Inn Wi-Fi

Kawai-cho 1-15-34 ●TEL/ 0574-28-8228



A lodge on the shore of the Kiso River. No food is available, so it's good for those that want to eat out and explore the city. You can see the four seasons change right from your room.

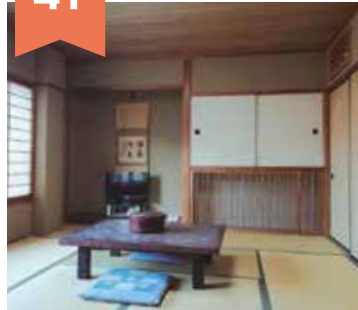
Please enquire for prices.

Traditional Inns

41

Sakae-ya Ryokan Wi-Fi

Kobi-cho, Shimokobi 505 ●TEL/ 0574-26-3138



This ryokan was designed so that guests could live there for two weeks without ever needing to leave. The home-made food is different every day, and there is a wide variety of options. All rooms are beautiful 11-18m² tatami rooms.

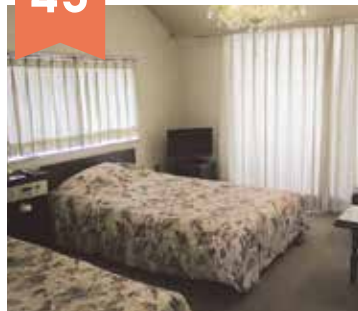
- 1 Room: 1 person from ¥5,500
- 2 or more people ¥4,950pp



43

Genrokuso Tourist Ryokan

Ota-cho 4297 ●TEL/ 0574-25-2651



A homely and traditional Japanese inn built in Ota Post Town over 60 years ago. They are proud of their stone bath and natural cuisine. Available for functions and events.

- From ¥6,600 (w. breakfast and lunch), Japanese / Western rooms



45

Fuji Ryokan

Otahnomachi 4-4-7 ●TEL/ 0574-25-2649



2 minutes' walk from the Nakasendo Trail, with satisfying food. Prices are negotiable.

Prices are negotiable.

- From ¥7,150 (w. breakfast and dinner)
- From ¥3,850 plus service charge for dinner for non-guests

Hotels

46



City Hotel Minokamo Wi-Fi/LAN

Ota-cho 2565-1 ●TEL/ 0574-27-1122

A large hotel located next to the station. Functions, weddings, and a restaurant is available with seasonal food and local sake.

- Single rooms from ¥7,260~
- Double rooms from ¥11,770~



47



Minokamo Station Hotel Wi-Fi/LAN

Ota-cho 1764-1 ●TEL/ 0574-25-3388

Spacious rooms at affordable prices. There are flexible plans for families with children and for long stays or groups.

- Single rooms from ¥6,200~
- Twin rooms from ¥10,400~



48



Route Inn Hotel Minokamo Wi-Fi

Ota-cho 2449-1 ●TEL/ 0574-26-1414

A convenient 1-minute walk from the station. Provides large hot and cold baths, a sauna, and a free Japanese breakfast buffet.

- Single rooms from ¥7,100~
- Twin rooms from ¥13,450~
- Double rooms from ¥12,200~



Sightseeing Courses

Introducing a temple sightseeing course, and a nature course. Why not try to pinpoint the essence of each season?



Temple Course

From the "Persimmon Temple", Zuirin-ji, with its giant Buddha statue, through Shogen-ji, famous for Zen meditation, and to see the living history of an ancient bronze bell at Ryoan-ji. As you follow the course deeper into the mountains, you unfold the story of Minokamo's history.

Spot.1 Zuirin-ji

5 min. by car from the Minokamo Interchange



The 10th shogun of the Muromachi Bakufu, Ashikaga Yoshitane, named this temple the "Persimmon Temple" after the special Hachiya Persimmons from the area. There are many treasures, including a wooden statue of Maitreya (Mirokubosatsu) buddha.



The 15 metre tall giant buddha is impressive!

Hachiya-cho Kamihachiya 9-1
TEL / 0574-26-1847 Parking Available

Spot.2 Shogen-ji

15 min. by car from Zuirin-ji



Known for the strictness and rigour of its Zen Buddhist aesthetic practice, this temple is frequented by politicians, entertainers, and sportspeople who seek inner peace and enlightenment. In spring and autumn, there are impressively-crafted weeping cherry blossom and ginkgo trees.



There are special anniversary rites each autumn.

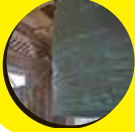
Ibuka-cho 872-2
TEL / 0574-29-1369 Parking Available

Spot.3 Ryoan-ji

5 min. by car from Shogen-ji



Known for its large Buddhist temple bell located above the main entrance. The bell is 130cm tall, 60.5cm in diameter and is a fantastic example of Nanbokucho Era (1336-1392) artisanship. Naturally, it's registered as an Important Cultural Property.



The ancient bronze bell is over 600 years old and is still in use!

Ibuka-cho 1776
TEL / 0574-29-1379

Nature Course

Explore the pride of Minokamo, our beautiful fruit picking farms, and feel the clean Kiso river waters on your skin. Enjoy Minokamo's bountiful nature with friends and family.

Spot.1 Yamanoue Fruit Picking Orchard

5 min. by car from Minokamo Interchange



Gorge on juicy pears to your heart's content in the biggest pear growing region in the prefecture. You can also buy farm fresh pears from one of the many direct farm outlets in the area.
Kosui Nashi Pear season: mid to late August
Nijusseiki Nashi Pear season: from September



The juiciness of freshly picked pears is unbeatable!

Yamanoue-cho 1093-78 TEL / 0574-25-4101
More info on p.18 Please confirm seasonality before coming.

Spot.2 Yamaki Marché Farm Café

3 min. by car from Yamanoue Fruit Picking Orchard



There are drinks, parfait, gelato, and lunch made from fresh fruit and dried fruits and herbs. All for enjoying in a beautiful natural setting.



The dry fruits are made with no additives on-site!

Yamanoue-cho 1004-3 TEL / 0574-26-5596
More info on p.6

Spot.3 River Port Park Minokamo

10 min. by car from Yamaki Marché Farm Café



Connecting rivers and cities, connecting people. This park presents the lifestyle concept of Minokamo, a place to play in nature. River Port Park offers river attractions such as rafting and SUP, and BBQ facilities outside in a lovely park.



Minokamo: A place to play in nature!

Mikado-cho 2-6-6 TEL / 0574-49-6717
More info on p.12

Information

Minokamo City Annual Events

- Jan** Zuirin-ji Persimmon & Tea Ceremony
2nd Sun. at Zuirin-ji
- Half Marathon**
Sun. of the long weekend at Gifu Seiryu-Satoyama Park
- Mar** Koyama Kannon Hatsu-uma Festival
1st Sun. at Koyama Kannon
- Apr** Suwa Shrine Festival
1st weekend at Suwa Shrine
- Kobi Shrine Festival**
2nd weekend at Kobi Shrine
- May** Nakasendo Ota-juku Spring Festival
Mid-May at Ota-juku

- Aug** Nakasendo Ota-juku Bon Dance Festival
Late Aug. Ota-juku
- Oct** Shogen-ji Anniversary Rites
12th Shogen-ji
- Aranagikyo Festival**
21st Kobi-no-Tengusan
- Nov** Minokamo Citizens' Festival
Early Nov. Weekend at Gifu Seiryu-Satoyama Park

Minokamo Dance Preservation Association
Minokamo City Hall, Industrial Promotion Division
TEL / 0574-25-2111
Est. 1954. A dance enthusiast group that seeks to bring joy to the city by preserving and teaching dances.

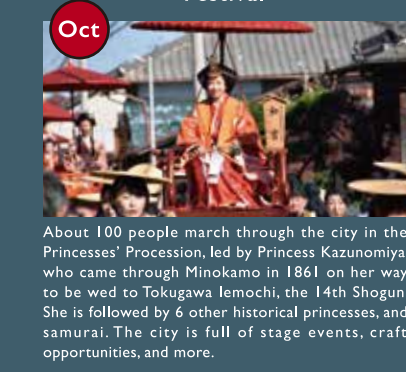
Minokamo Onsei Festival

Summer Festival



At Kisogawa Ryokuchi Park

Autumn Festival



In the Ota-juku Post Town area

Gifu Tono Bicycle Club

Mitake-cho Kamiedo 1110



A road bike club that is active around the mountains in the Tono region (Southeast Gifu).

TEL / 0574-40-8188



51



Yamanoue Fruit Picking Orchard

Yamanoue-cho 1093-78

With views of both the Kiso river and the Hida river, you can get a panoramic view of nothing but green mountains and valleys. From mid to late August you can pick Kosui Nashi Pears, and from September you can pick Nijusseiki Nashi pears.

- TEL / 0574-25-4101
- Opening hours: 9:00am – 5:00pm (from the 16th of August; reception until 3:00pm)
- Open every day of pear season
- Parking: 100 spaces
- All-you-can-eat fruit picking: ¥1,100 adults / ¥880 kids up to 12 y.o. / ¥660 kids under 7 y.o.

For those travelling from Minokamo



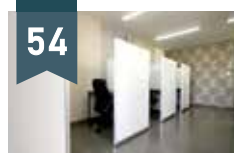
Kinki Japan Tourist Travel Agency Minokamo Tourist

Ota-cho 2565-1 (City Plaza, Ground Floor)
TEL / 0574-25-0323
Opening Hours: 10:00am – 6:00pm
Closed Sundays, public holidays, over New Year's, Obon, Golden Week, and occasionally for training. Parking available

Business Travel

Ota-cho 2689-2
TEL / 0574-26-9114
Opening Hours: 10:00am – 6:00pm
Open every day Parking: 2 spaces

For those looking for a business partner or rental office



Community & Co-working Space Co-yane

Ota-cho 2689-30
The first coworking space in Minokamo.

- Mail / co-yane.minokamo@gmail.com
- Opening Hours: 8:00am – 10:00pm (reservations required)
- Open every day*
- *Closes occasionally at owner's discretion.
- Fees: 1 space in the shared office (3rd floor): ¥16,500/month
Space Rental (2nd floor, one room): ¥2,200/hour